



being healthy



feeling good



community



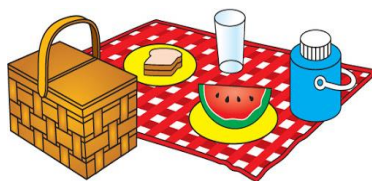
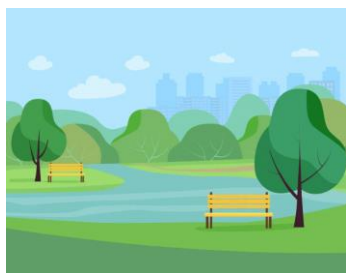
learning and work

## Atherstone Community Hub Activities



### Quiz Time

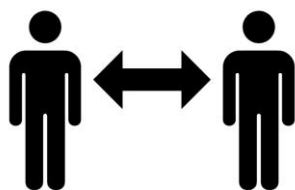
Come and join the fun at our quiz  
Starting Wednesday 14th July  
At  
3pm



### Picnic

Come along and join us at Hartshill Hayes Country Park, each Thursday at 1:30 pm (depending on the weather).

If you would like to bring along food and drink. We can have a little picnic, a catch up and finally socialise again.



SOCIAL DISTANCING

We will also be organising different outdoor activities with a group of 6 Maximum with social distancing. Please check Nw Community Hubs website, Facebook or Twitter for activity information

[www.facebook.com/nwcommunityhubs](https://www.facebook.com/nwcommunityhubs)

<https://twitter.com/nwcommhubs>

<https://www.nwcommunityhubs.com>



If you would like to make an appointment or attend one of the outdoor activities

**Sherelle** on **07874 684719** or

**Rachel** on **07415 302859**

email [atherstonehub@isswarks.com](mailto:atherstonehub@isswarks.com) or

[rachel@isswarks.com](mailto:rachel@isswarks.com)